

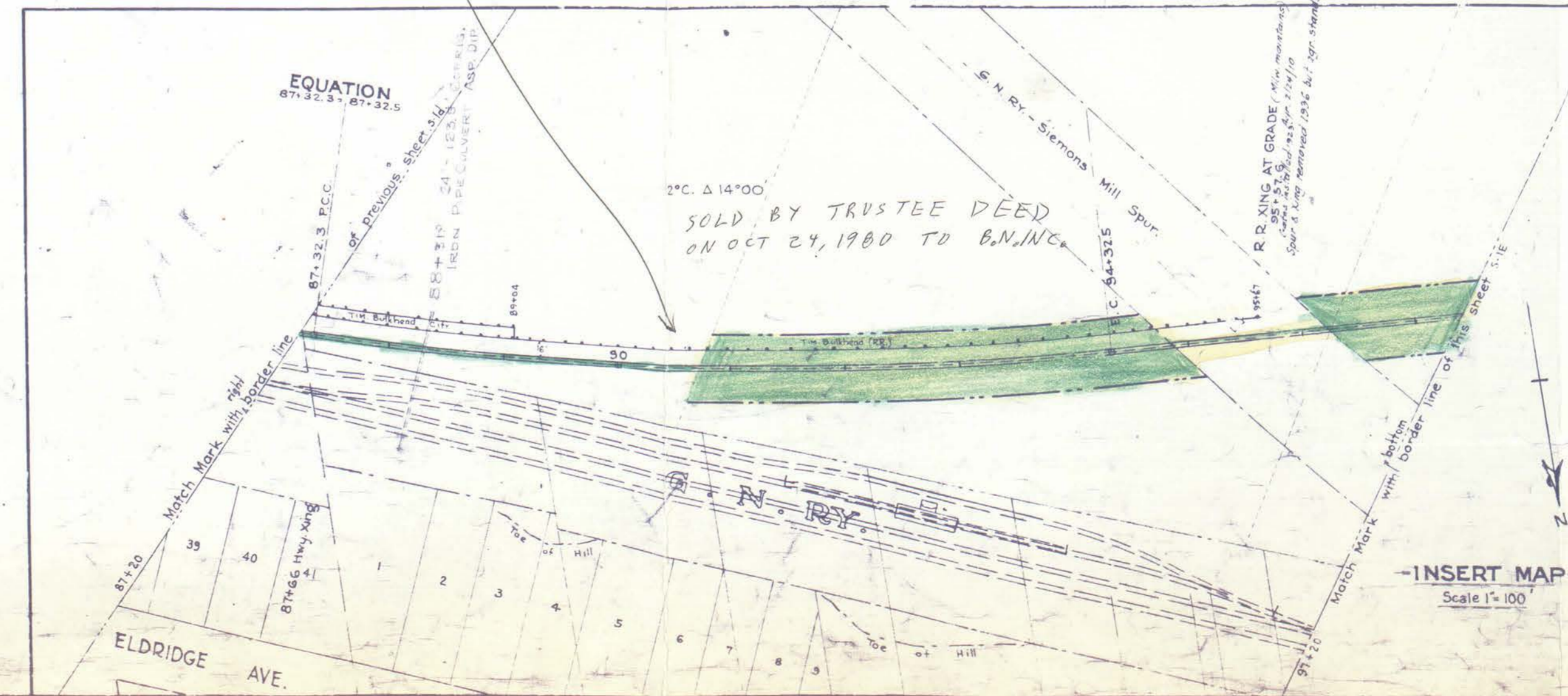
N.E. 59388 Filled Area
Comp. 12-3-92
Ag. 10-3-23 160' x 100' owned by P.L. of
Bellingham, maintained by A.R.C. at expense of Port
No. 12-3-92

SOLD BY TRUSTEE DEED
ON OCT 24, 1900 TO B.N. INC.

To City of Bellingham for Road purposes
by appropriation December 12, 1909.
(See Milw. letter of 2-10-70)
See map V-22/2

Olympic - Portland Cement Co. Spur

See V-22/2



No.	GRANTOR	GRANTEE	INSTRUMENT	DATE	BOOK	PAGE	REMARKS
3117	GRANTOR	GRANTEE	Q.C. DEED	7-20-01	WATSON CO.	1001	

EQUATION
148-83.0 E 148-83.5 W

BELLINGHAM
WHATCOM COUNTY - WASH.
STATION MAP
LANDS TRACKS & STRUCTURES
CHICAGO MILWAUKEE ST. PAUL & PACIFIC R.R.
OPERATED BY THE
CHICAGO MILWAUKEE ST. PAUL & PACIFIC R.R.
COAST DIVISION MAIN LINE
STATION 5700 TO STATION 154+00
SCALE 1"=100' JUNE 22 1932
OFFICE OF ASSISTANT CHIEF ENGINEER
SEATTLE, WASH.

VW22
S-IF

67-5-3-18-2